
Advanced Visualization in NetDraw

Conducting an Organizational Network Analysis

Identify a strategically important group

Assess meaningful and actionable relationships

Constructing and administering the survey

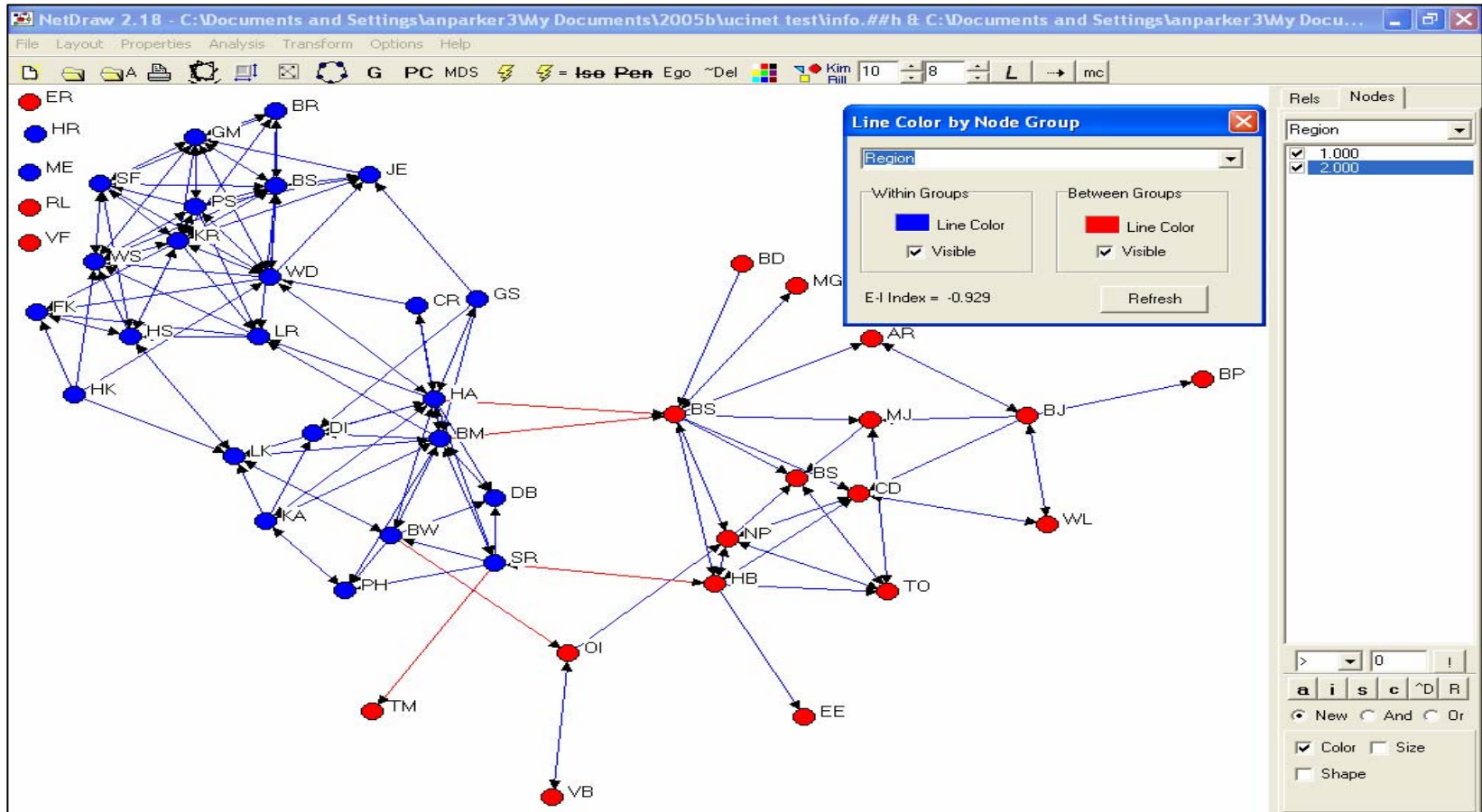
•❖ **Visual analysis of organizational networks**

Quantitative analysis of organizational networks

Create meaningful intervention plans

Assess progress and outcomes

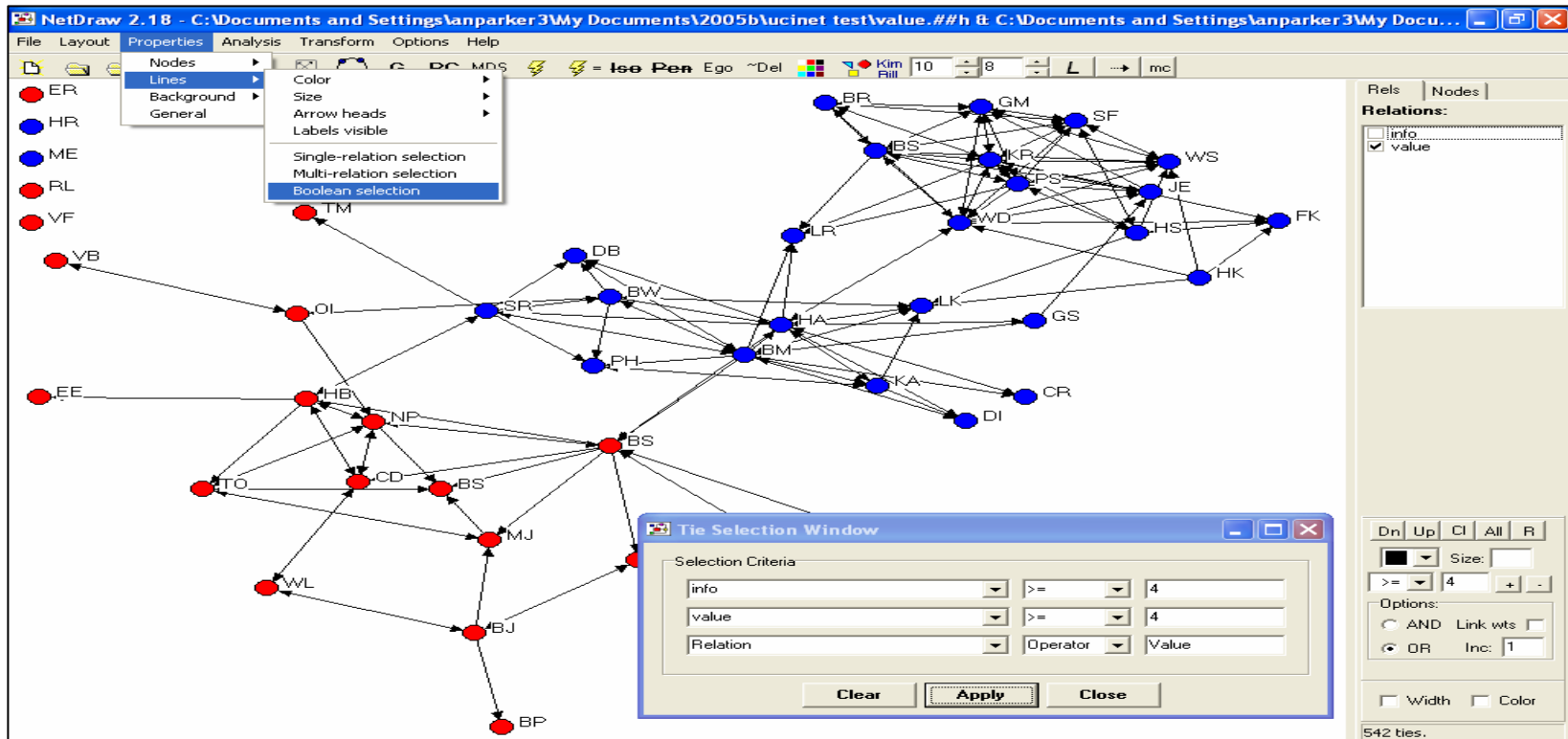
Viewing Within/Between Group Ties in NetDraw



Step 1. Properties > Lines > Color > Node attribute-based

Step 2. Select attribute, then choose within, between or both

Combining Relations in NetDraw



Step 1. Properties > Lines > Boolean selection

Step 2. Select relations, e.g. info and value

Step 3. Select cut-off operators and values, e.g. >= 4

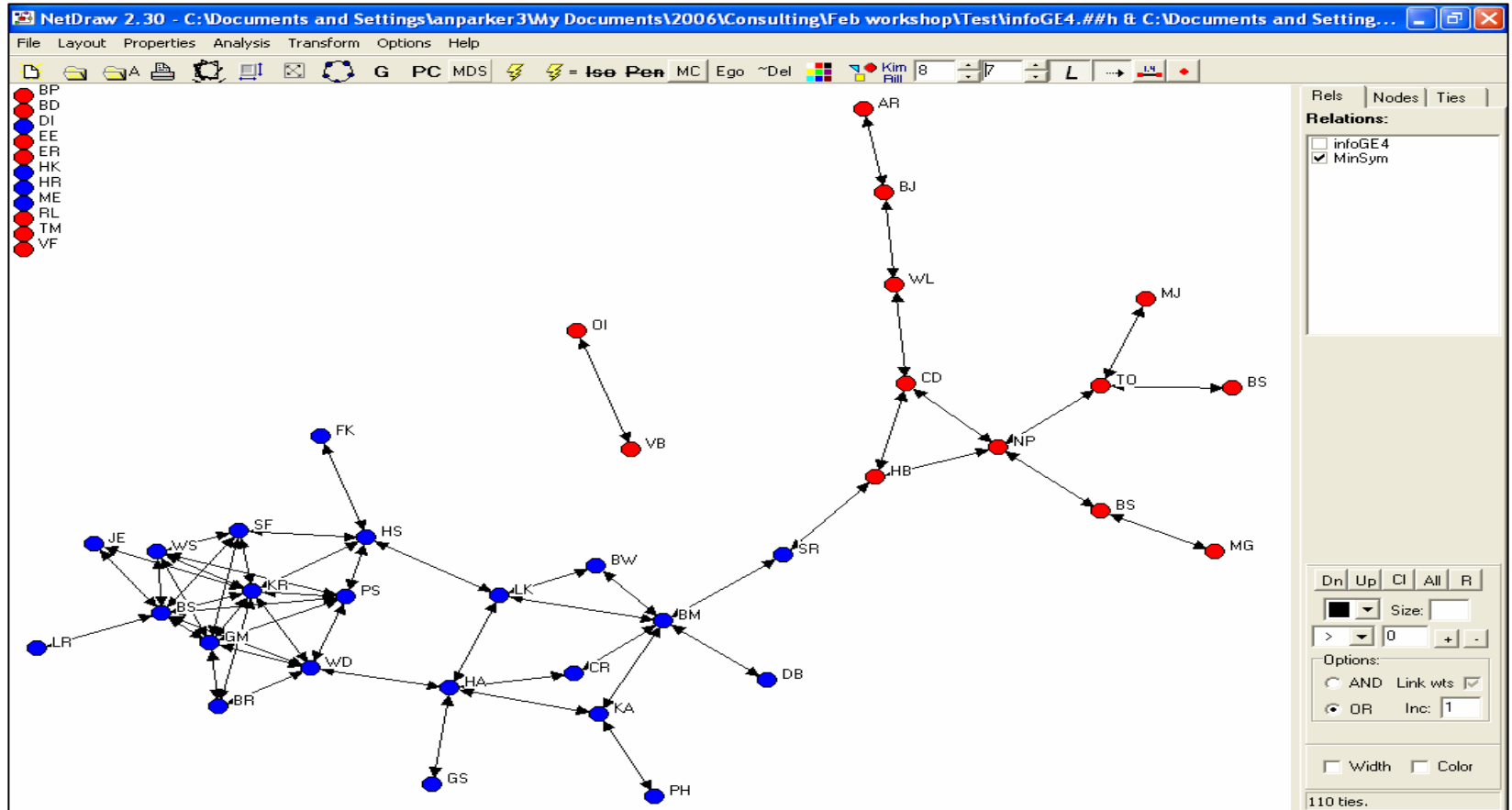
Symmetrizing Data in Netdraw

The screenshot shows the NetDraw 2.30 interface. The main window displays a network graph with nodes represented by colored circles (red, blue, black) and edges representing relationships. A dialog box titled "Symmetrize" is open, showing the "Method of Symmetrizing" options: "Minimum (intersection)" (selected) and "Maximum (union)". The "Output Relation" is set to "MinSym". A blue callout box with a white background and black text points to the "Relations" panel on the right, which shows "infoGE4" selected. The callout text reads: "This routine only works if you previously dichotomized the data in Ucinet." The "Relations" panel also shows "Select Attribute:" and "Options:" sections.

Step 1. Transform > Symmetrize

Step 2. Select Minimum (keeps only reciprocal ties), or maximum (makes all ties reciprocal).

Symmetrizing Data in Netdraw (cont)



Step 1. Redraw network. First choose ⚡ option on tool bar

Step 2. Then choose ⚡ = option on tool bar

The remainder of this document is restricted to Network Roundtable members.

Please login if you are a member and would like to access the full version as well as review other reports not listed on this page.