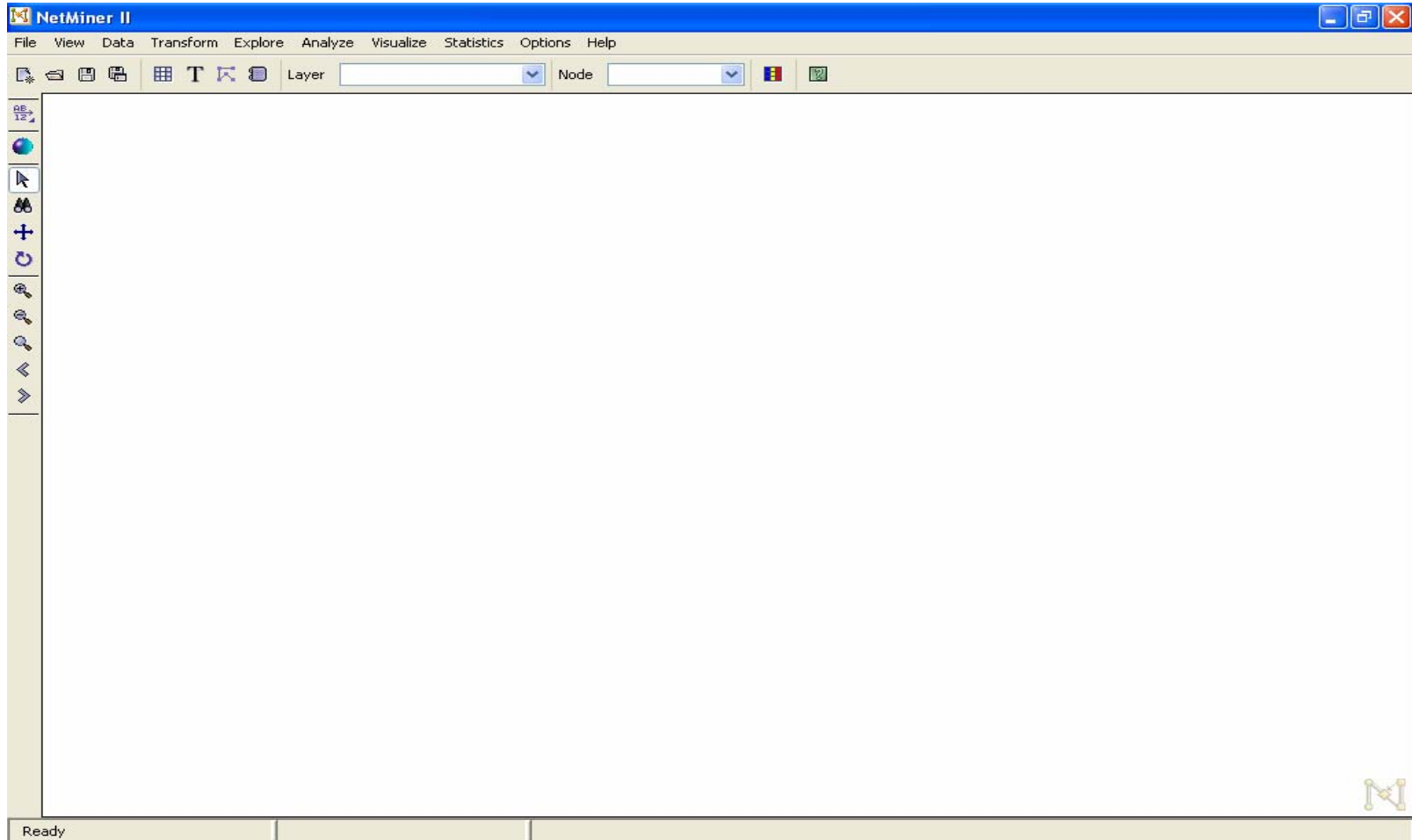

Visualizing Networks Using NetMiner

Organizational Network Analysis Software

- There are numerous network analysis software packages available. We use the following.
 - UCINET: Windows based tool which is used to manipulate and analyze the data. It includes a comprehensive range of network techniques. See www.analytictech.com
 - NetDraw: Visualization software that creates pictures of networks. It can also incorporate attribute data into the diagrams. See www.analytictech.com
 - Pajek: Sophisticated visualization software available from <http://vlado.fmf.uni-lj.si>
 - Netminer: Visualization and analytic tool available. See www.netminer.com

An Overview of NetMiner



Importing Network Data from Excel

Microsoft Excel - info.xls

File Edit View Insert Format Tools Data Window Help

Type a question for help

Reply with Changes... Egd Review...

100%

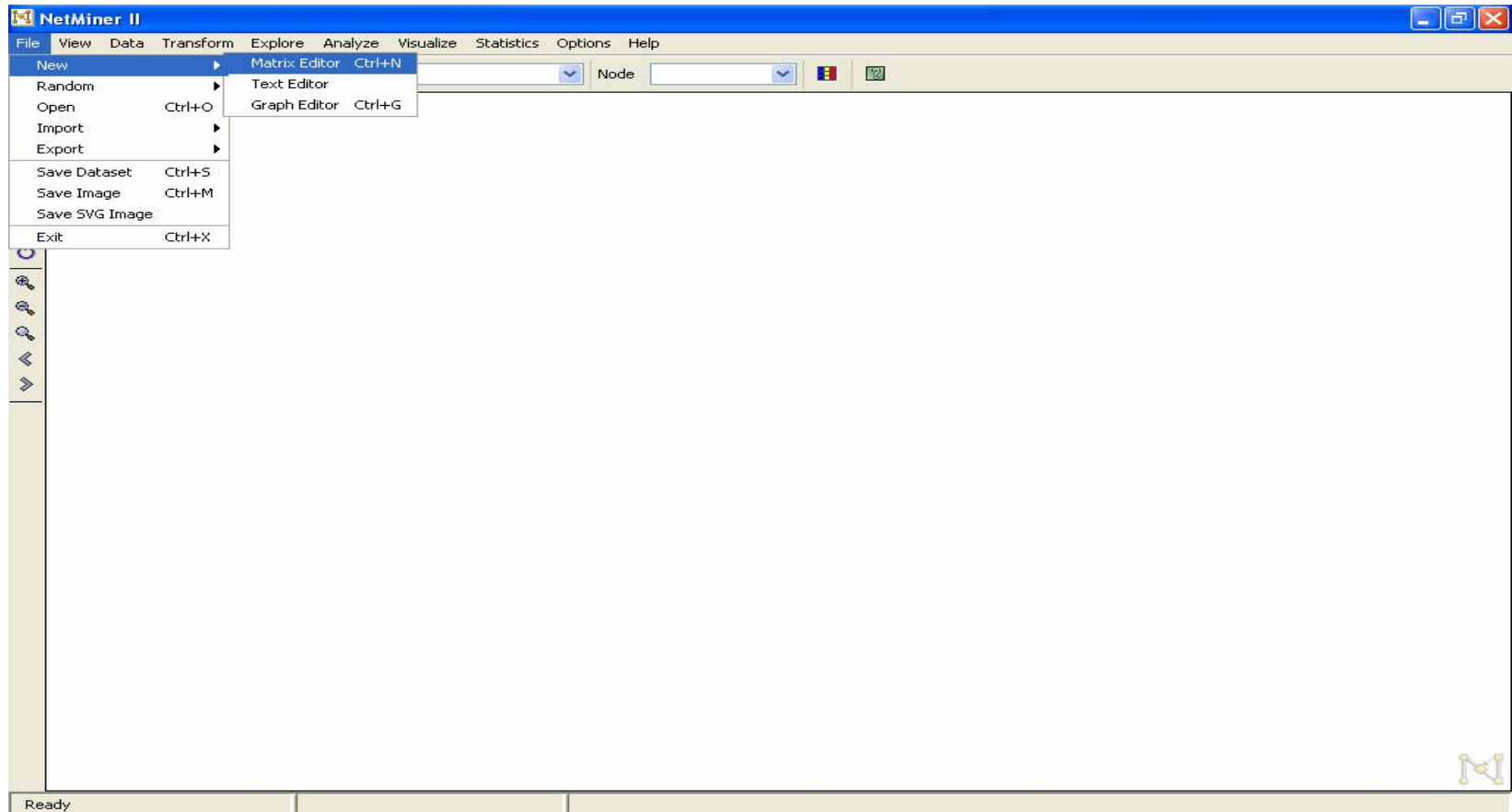
Arial 10

	A	B	C	D	E	F	G	H	I	J	K	L	M	N	O
1		AR	BM	BJ	BS	BR	BL	BW	BC	BP	BD	CR	CD	DI	DB
2	AR	0	0	5	0	0	0	0	3	3	0	0	3	0	0
3	BM	1	0	0	2	1	3	5	4	0	1	5	1	4	4
4	BJ	4	0	0	1	0	0	0	1	4	0	0	4	0	0
5	BS	0	0	0	0	0	0	0	3	0	0	2	0	0	0
6	BR	0	1	0	0	0	5	1	0	0	0	0	0	1	2
7	BL	0	1	0	0	3	5	1	0	0	0	1	0	1	1
8	BW	0	5	0	0	0	0	0	3	0	0	3	0	3	5
9	BC	4	3	2	4	0	0	3	0	3	3	1	4	0	0
10	BP	3	0	2	1	0	0	0	1	0	0	0	1	0	0
11	BD	3	1	0	1	0	0	0	4	1	0	1	1	0	1
12	CR	0	5	0	0	0	0	0	0	0	0	0	0	0	0
13	CD	3	1	2	1	1	1	1	3	2	1	1	0	1	1
14	DI	0	3	0	0	1	1	2	0	0	0	1	0	0	0
15	DB	0	4	0	0	1	1	2	1	0	0	1	0	0	0
16	EE	0	0	0	0	0	0	0	0	0	0	0	0	0	0
17	ER	1	1	1	1	1	1	1	1	1	1	1	1	1	1
18	FK	0	0	0	0	1	2	0	0	0	1	0	0	1	0
19	GS	1	4	0	0	2	0	2	2	1	1	2	0	5	0
20	GM	0	3	0	0	5	5	3	0	0	0	2	0	3	2
21	HA	2	3	0	2	2	2	3	4	1	2	4	2	5	4
22	HK	0	2	0	0	0	3	0	0	0	0	0	0	0	0
23	HB	1	2	1	2	1	1	1	3	1	1	2	5	1	1
24	HS	2	1	0	0	3	3	1	0	0	3	2	0	1	1
25	HR	0	0	0	0	0	0	0	0	0	0	0	0	0	0
26	JE	0	2	0	0	2	5	1	0	0	0	1	0	1	0
27	KR	1	1	0	0	5	5	1	0	1	0	2	0	1	0
28	KA	0	4	0	0	2	2	2	0	0	0	1	0	5	3
29	LR	0	3	0	0	2	5	2	0	0	2	2	0	2	0
30	LK	0	4	0	1	3	1	4	1	0	0	1	0	3	1
31	ME	0	0	0	0	0	0	0	0	0	0	0	0	0	0
32	MC	2	2	1	3	0	0	0	5	1	2	0	2	0	0

Sheet1

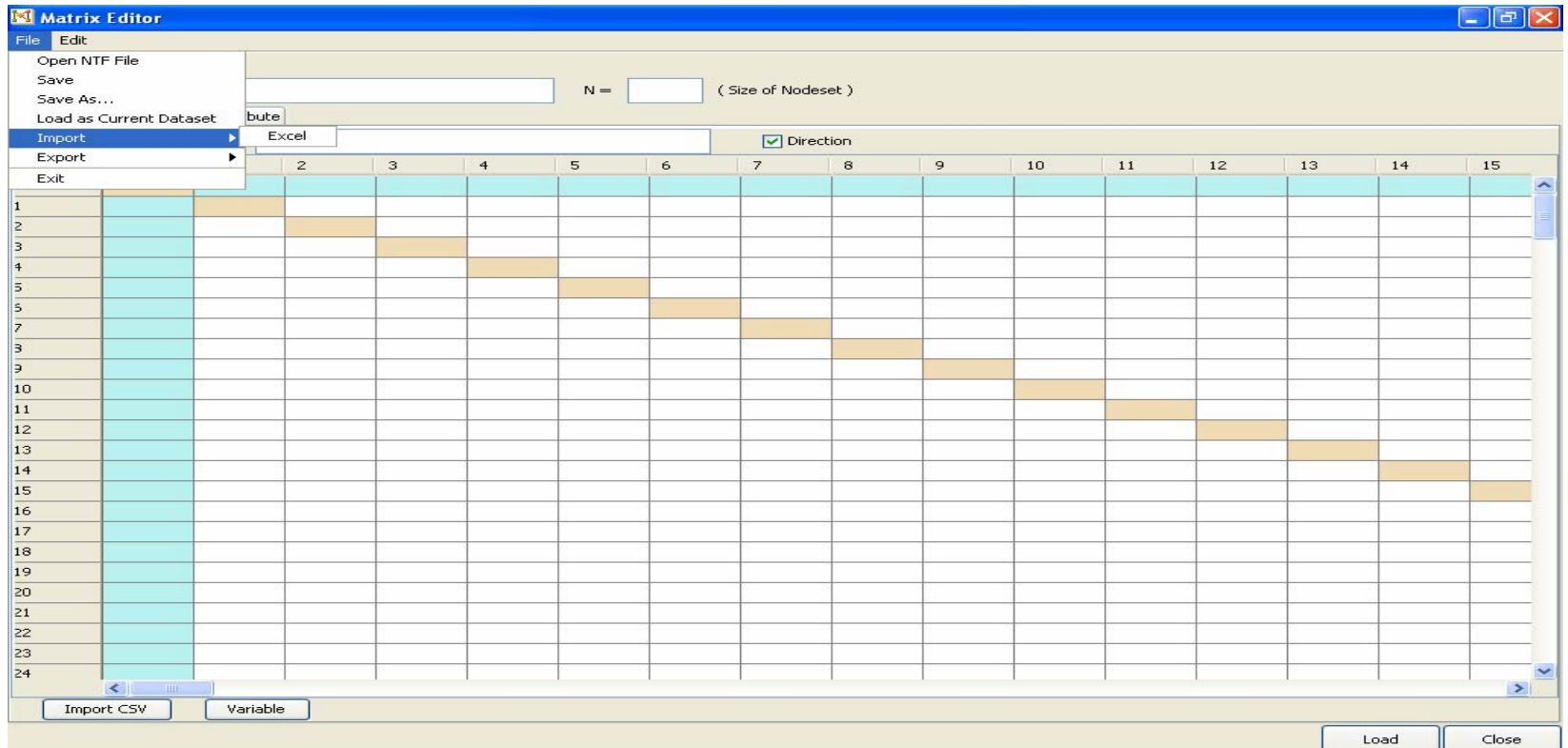
Ready

Importing Network Data from Excel



Step 1. File > New > Matrix Editor

Importing Network Data from Excel



Step 2. File > Import > Excel

Step 3. Choose appropriate file, e.g. info

Step 4. Check “row labeled” and “column labeled”

Step 5. Add title (workshop data), Nodeset size (46), and variable name (info)

The remainder of this document is restricted to Network Roundtable members.

Please login if you are a member and would like to access the full version as well as review other reports not listed on this page.